

# Low Pass Filter

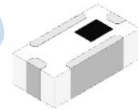
## Features

- excellent power handling
- small size
- 7 sections
- temperature stable
- LTCC construction, and has good moisture resistance, corrosion resistance, high reliability.

## Applications

- harmonic rejection
- VHF/UHF transmitters/receivers
- Base Station of Mobile Communication, lab use.

## HT-LFCN-722+



50Ω DC to 7200 MHz

| Electrical Specifications at 25°C |                |                |      |      |      |      |
|-----------------------------------|----------------|----------------|------|------|------|------|
| Parameter                         |                | Frequency(MHz) | Min. | Typ. | Max. | Unit |
| Pass Band                         | Insertion Loss | DC-7200        | -    | -    | 2    | dB   |
|                                   | Freq.Cut-Off   | 7970           | -    | 3.0  | -    | dB   |
|                                   | VSWR           | DC-7200        | -    | 1.6  | -    | :1   |
| Stop Band                         | Rejection Loss | 8980           | 20   | -    | -    | dB   |
|                                   |                | 9270-10060     | 25   | 30   | -    | dB   |
|                                   |                | 15000          | -    | 30   | -    | dB   |

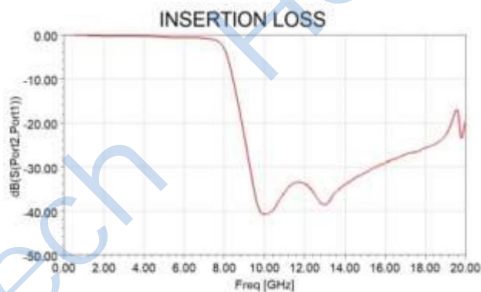
### Maximum Ratings

|                       |                 |
|-----------------------|-----------------|
| Operating Temperature | -55°C to 100°C  |
| Storage Temperature   | -55°C to 100°C  |
| RF Power Input*       | 8W max. at 25°C |

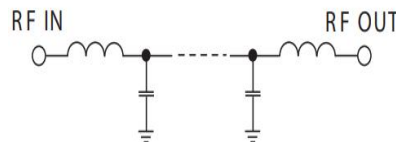
\* Passband rating, derate linearly to 3.5W at 100°C ambient. Permanent damage may occur if any of these limits are exceeded.

### Pin Connections

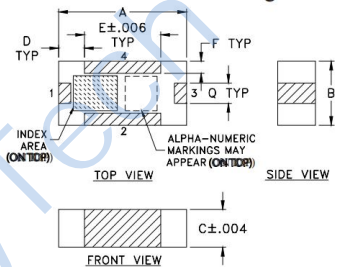
|        |     |
|--------|-----|
| RF IN  | 1   |
| RF OUT | 3   |
| GROUND | 2,4 |



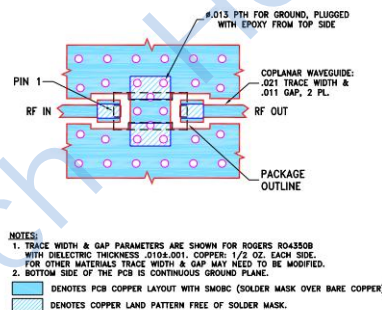
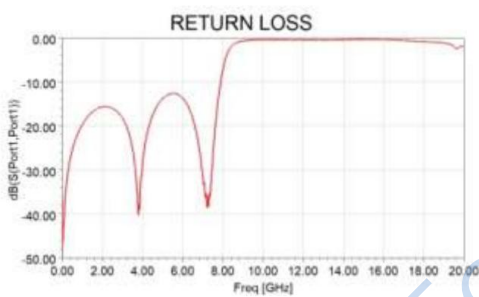
### Functional Schematic



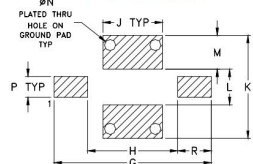
### Outline Drawing



### Suggested PCB Layout



### PCB Land Pattern



Suggested Layout  
Tolerance to be within ±0.02

### Outline Dimensions: Unit (mm)

|   |      |   |      |   |       |
|---|------|---|------|---|-------|
| A | 3.20 | B | 1.60 | C | 0.94  |
| D | 0.66 | E | 1.91 | F | 0.30  |
| G | 4.62 | H | 2.64 | J | 1.75  |
| K | 3.02 | L | 1.04 | M | 0.99  |
| N | 0.33 | P | 0.61 | Q | 0.51  |
| R | 0.99 |   | wt   |   | 0.02g |