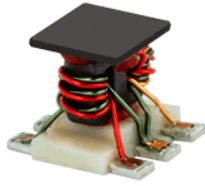


H2TCP-2-10+



5-1000MHz

50Ω 2 Way-0° Power Divider

Features

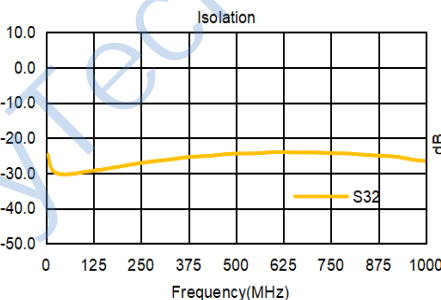
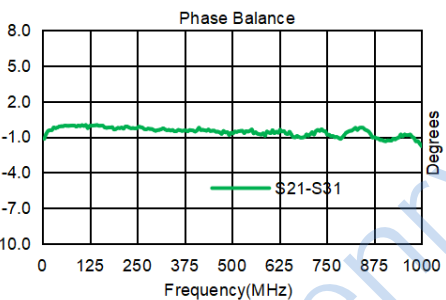
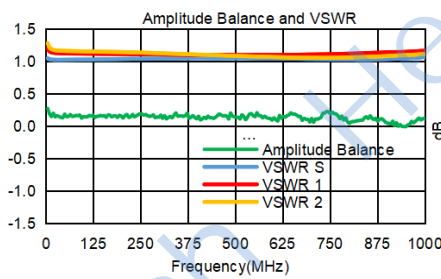
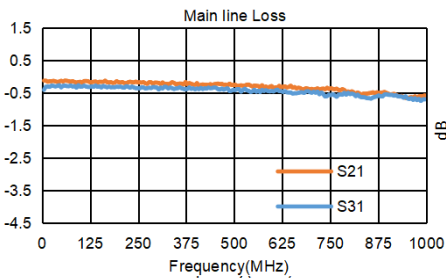
- RF Power, 0.5W max
- Operating temperature range: -40°C to +85°C
- Storage temperature range: -55°C to +100°C
- 260°C Reflow Compatible
- RoHS compliant and lead free

Applications

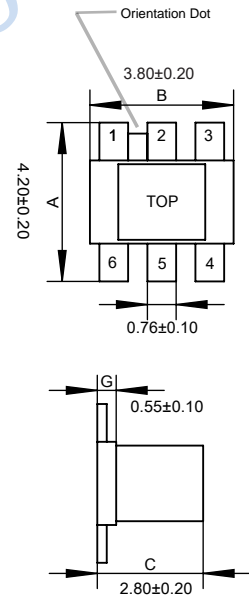
- For catv
- For broadband and wireless communications

Electrical Specifications: TA=25°C, 0dBm, Z0=50Ω

Parameter	Test Conditions	Units	Min	Typ	Max
Main line Loss (Pin6-4)	5-1000MHz	dB	—	0.5	1.0
Main line Loss (Pin6-3)	5-1000MHz	dB	—	0.5	1.0
VSWR	5-1000MHz	dB	—	1.0	1.5
Amplitude Unbalance	5-1000MHz	dB	—	0.3	1.0
Phase Unbalance	5-1000MHz	dB	—	1.0	6.0
Isolation	5-1000MHz	dB	16.0	22.0	—

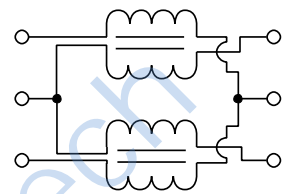


Outline Drawing(mm)

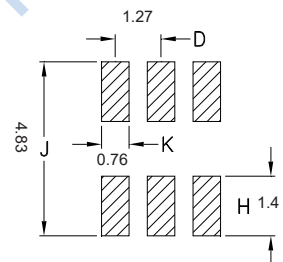


Electrical structure

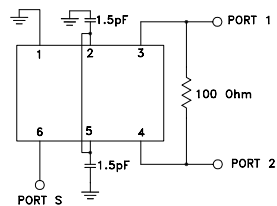
Fig K



Recommended layout(mm)



electrical schematic



Pin Connections

SUM PORT	6
PORT 1	3
PORT 2	4
GROUND	1
EXT. CAPACITOR 1.5pF	2 OR 5 TO GND